



# FSP

# CATALOGUE

8<sup>TH</sup> EDITION

AUSTRALIA & NEW ZEALAND

EDUCATION | MINING | SAFETY | FIRE | MARINE | STORAGE | AGRICULTURE | HOSPITALITY | CIVIL PRODUCTS

## LOCKERS

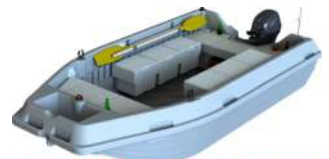


## MINING & SAFETY



## STORAGE

## FIRE



## AGRICULTURE

## MARINE

**EQUIPMENT**  
PLACEMENT

08 9479 4988  
sales@equipmentplacement.com.au

# Contents

## LOCKERS

Lockers - OZLOKA.....	4
Lockers A-Series.....	12
Accessories - Lockers.....	14
Locks.....	15
Phone Cubby.....	16
Mobile Phone Locker.....	17
Pigeon Hole Lockers.....	18
Vented Wardrobe Locker.....	19
OL1800 Locker.....	20
Vented Lockers.....	21
Tool Lockers.....	22
PVC Storage - Racks - Benches.....	23
Locker Colour chart.....	24

## CHOCKS

Wheel Chocks Heavy-Duty Plastic.....	25
Poly Mounting Brackets.....	28
Trolleys for OZCHOKS.....	30
Drill Chock.....	31
Parking Stop.....	32
Speed Humps.....	32
Cable Protection.....	33

## MINING

Hole Savers Drill & Blast.....	34
Cable Plug Protector.....	35
Work Platform.....	36
Engine Bay Ladder.....	36
Customised Engine Components Guards Covers & Parts.....	37
Fire Suppression Bracket.....	39
Hungry Boards.....	40
Wheel Motor Covers.....	42

Mining Vehicle Fire Safe Engine Cover.....	44
Rooftop ID Number.....	45
Delineation Posts.....	46
Picket Pockets.....	47
Mine Hanging Streamers.....	48

## STORAGE

Tool Boxes.....	49
OZ Box.....	50
Head Board Water tank.....	50
Battery Storage Box.....	51
Battery Box.....	52
Flammable Storage.....	53
Corrosives Storage.....	54
Document Storage Boxes.....	55
Spill Caddy.....	56
Drum Cover Lids.....	57
Spill Pallets.....	57
Oil Trolleys.....	59

## FIRE

Fire Extinguisher Cabinets.....	61
Fire Hose Reel Cabinets.....	62
Underground Depot Boxes.....	64
Fire Extinguisher Bracket.....	65
Portable Extinguisher Stand.....	66
Fire Hose Reels - Heavy Duty.....	68
Fire Hose Reel Cover.....	72
Multi-Purpose Cabinets.....	73

**SAFETY**

Safety Flags .....	75
Safety Cones .....	77
Portable Bollard .....	77
Safety Barrier .....	78
Barrier - Dirt Bag™ .....	79
Safety Signs .....	80
Signage - Foldable .....	81
Solar Lights - Flashing .....	81

**VEHICLE**

Pallet Loading Angle .....	82
Wheel Nut Indicator .....	83
Road Emergency Triangle .....	83

**AGRICULTURE**

Reggie Post™ .....	84
Post and Rail Fence .....	86
FSP Tweena® .....	88
Picket Fence .....	89
PVC Electric Fence Posts .....	90

**MARINE**

Oz Dock - Dry Dock system .....	91
Poly Boat .....	93
Megadock Pontoon .....	94

**WATER TANKS**

Water Trough .....	95
Water Tanks .....	96

**VARIOUS**

Portable Evaporative Cooler .....	98
Ozki Ice Box .....	99

How To Order .....	101
--------------------	-----

## Lockers - OZLOKA®



OZLOKA® lockers have unique advantages over lockers made from other materials such as timber and metal. They are designed to last and to keep looking good in all environments. OZLOKA® Lockers are easy to clean - simply hose them out.

- ▶ The lockers are made of Heavy-duty Polyethylene with a high-grade stainless steel hinge - so they are perfect for wet areas, coastal locations and the outdoors.
- ▶ UV stabilised with a HUGE range of anti-fade colours to choose from
- ▶ Lightweight & stackable so they are easy to move and install
- ▶ Quieter than metal or timber lockers, no banging doors.
- ▶ No painting required
- ▶ Easy to clean and lowest maintenance. Just hose them out!
- ▶ Proven strength and durability - backed by our 15 year warranty.
- ▶ Graffiti is easier to remove
- ▶ Smooth Corners - No more sharp edges





Colours shown are indicative only and may vary due to printing.  
Certain product may not be available in your area please, call or inquire online for clarification.





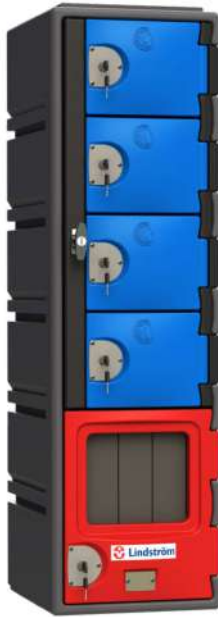
International Patent . No. 1050325

Slight size variation may occur due to manufacturing process. Speak to a sales consultant for more information.

Colours shown are indicative only and may vary due to printing.

Certain product may not be available in your area please, call or inquire online for clarification.

These popular models of OZLOKA® Lockers require no customisation and are all available with shorter lead times for delivery. All our popular models are available in 25 different colours.



Laundry Locker



A4GRY-2PUR2  
Purple



A4GRY-10RA4  
Orange



B4GRY-2MBE2  
Mountain Blue



B3GRY-3MER1  
Merino



B4GRY-4YEL1  
Yellow



C4GRY-2MAG2  
Magenta



A3GRY-3MON1  
Monument



OLPH500



C4GRY-4LGN1  
Lime Green



C4GRY-1DBE4  
Dark Blue

International Patent No. 1050325

Slight size variation may occur due to manufacturing process. Speak to a sales consultant for more information.

Colours shown are indicative only and may vary due to printing.

Certain product may not be available in your area please, call or inquire online for clarification.

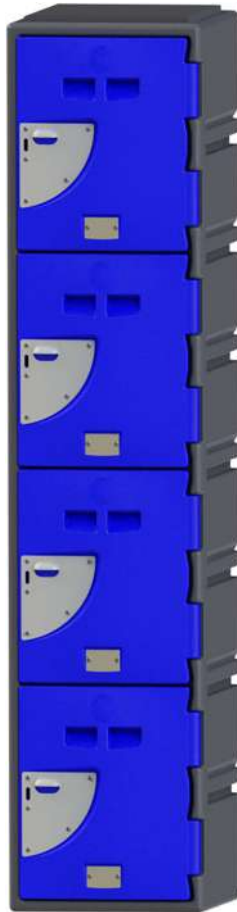




**OL1800GY**  
Yellow



**A9GRY-3MAG3**  
Magenta



**A8DGY-2DBE4**  
Dark Blue



**LETTER BOX  
LOCKER**



International Patent No. 1050325

Slight size variation may occur due to manufacturing process. Speak to a sales consultant for more information.

Colours shown are indicative only and may vary due to printing.

Certain product may not be available in your area please, call or inquire online for clarification.

# Build your lockers....your way.

The OZLOKA® system is based on a simple modular system that allows you incredible flexibility. Choose your locker body - then your locker height - finally how many doors.

Create your own unique locker installation in three simple steps:

# 1

## Choose Locker Body

Select from 6 different locker body sizes - A series (standard), B series (deeper unit), C series (wide unit), D series (narrowest unit), E series (smallest) and New H series (widest and deepest).

Not all bodies available in 9 different heights (step 2)



A Series

B Series

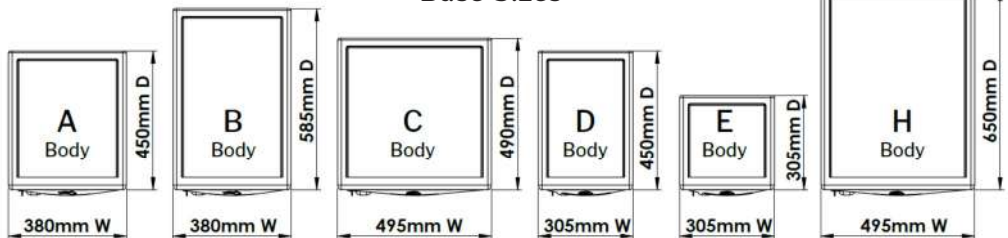
C Series

D Series

E Series

H Series

### Base Sizes



Standard width & depth. Up to 1930mm high

Standard width and & deeper. Up to 1930mm high

Wider & deeper than standard. Up to 1930mm high

Narrowest width & standard depth. Up to 1930mm high

Narrow width & shallow depth. Up to 1930mm high

Widest and deepest. Only in 880mm high

International Patent No. 1050325

Slight size variation may occur due to manufacturing process. Speak to a sales consultant for more information.

Colours shown are indicative only and may vary due to printing.

Certain product may not be available in your area please, call or inquire online for clarification.

## Choose Locker Height

Choose 1 - 9 different locker heights.

Height ranging from 250mm to 1930mm.

Height	Hinges
250mm	1
465mm	2
670mm	3
880mm	4
1090mm	5
1300mm	6
1510mm	7
1720mm	8
1930mm	9

2



## Choose Locker Door(s):

Select the standard single doors or multiple doors.

You can have different colour doors and size combinations.

The team at FSP can create a custom OZLOKA® solution to fit your exact needs.

3



International Patent No. 1050325

Slight size variation may occur due to manufacturing process. Speak to a sales consultant for more information.

Colours shown are indicative only and may vary due to printing.

Certain product may not be available in your area please, call or inquire online for clarification.

# Lockers A-Series

The A series is the most popular locker in our range. It is wide enough for a back pack and motor bike helmets. Customers utilise shelves when going over 2 hinges high. Perfect for the education sector and the work place.

## Storage for all your needs



## DOOR VARIATIONS - From 1 to 9 doors



International Patent No. 1050325

Slight size variation may occur due to manufacturing process. Speak to a sales consultant for more information.

Colours shown are indicative only and may vary due to printing.

Certain product may not be available in your area please, call or inquire online for clarification.

*There are hundreds of door configurations available.*

*Please contact us to optimise the best solution for your needs!*



International Patent No. 1050325

Slight size variation may occur due to manufacturing process. Speak to a sales consultant for more information.

Colours shown are indicative only and may vary due to printing.

Certain product may not be available in your area please, call or inquire online for clarification.

# Accessories - Lockers

Rail Hook



Clothes Hook



Sloping Hood /Top



Padlock & Master Keys

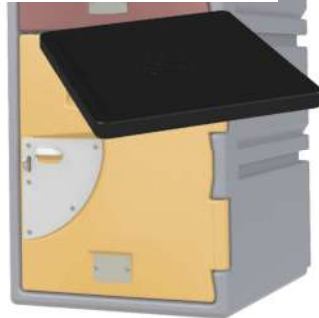


Number Plaque

Stainless Steel Laser etched  
(Optional Logo)



Additional Shelves



USB Charge Ports



Kicker Base



International Patent No. 1050325

Slight size variation may occur due to manufacturing process. Speak to a sales consultant for more information.

Colours shown are indicative only and may vary due to printing.

Certain product may not be available in your area please, call or inquire online for clarification.

# Locks

## Standard Locks

Standard Padlock



Key Lock



Combination Lock



L Handle



For Tall Locker doors  
5 - 9 Hinge =  
1090mm - 1930mm

## RFID Locks

CAM Lock

Turn to Open



External RFID

Pops Open



Hidden RFID

Pops Open



Button RFID

Pops Open



## Other Locks

Digital Combination Locks



Electronic CAM Lock



Other Locking  
options available

International Patent No. 1050325

Slight size variation may occur due to manufacturing process. Speak to a sales consultant for more information.

Colours shown are indicative only and may vary due to printing.

Certain product may not be available in your area please, call or inquire online for clarification.

# Phone Cubby

Lock away phones during class hours

The phone cubby allow you to have multiple phones stored safely.

This unique product hold 6 mobile phones.

Designed to fit in our A, B, C and D series lockers.

## Features:

- ▶ Dark Colour
- ▶ Heavy-Duty One Piece Construction
- ▶ Lightweight
- ▶ UV Stabilised
- ▶ Recyclable
- ▶ Resistant to:
  - ▶ Chemicals
  - ▶ Water
  - ▶ Oils
  - ▶ Corrosion



**DISCOUNTED WITH  
LOCKER PURCHASE**



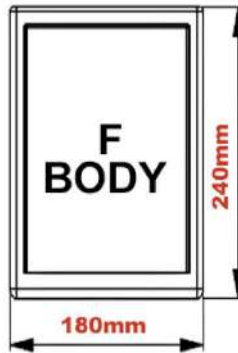
## Phone Cubby

**Product Code: Phonecubby6**

Size: 100mm W x 167mm D x 60mm H



# Mobile Phone Locker

**Base Sizes / Foot Print**

The perfect storage unit for mobile phones, wallets and other small personal items. The FSP Mobile Phone Locker is designed to fit most modern mobile phones including larger smart phones.



Resists being cut or jimmied open. Fitted with stainless steel locker loop. Designed to be secured closed with an appropriate padlock for maximum security. Optional padlock available.

Size: 180mm W x 240mm D x 600mm H



## Easily mountable locker banks.

Available in a range of colours to suit your environment. Optional wedge-top hood and kicker base. Optional USB charging ports.

Resistant to cleaning solvents and graffiti, chewing gum or stickers can be removed without affecting the integrity of the enclosure.



International Patent No. 1050325

Slight size variation may occur due to manufacturing process. Speak to a sales consultant for more information.

Colours shown are indicative only and may vary due to printing.

Certain product may not be available in your area please, call or inquire online for clarification.

# Pigeon Hole Lockers

## Temporary storage

The pigeon hole series lockers come in a minimum height of 880mm and a maximum of height 1300mm. They are available with in 3 different footprints / base sizes. A, C and D

The 880mm height pigeon hole lockers can be divided into multiple sections. Ideal for bags outside a classroom

The 1300mm height pigeon hole locker can also be divided into multiple sections. Great for larger bags or tall equipment

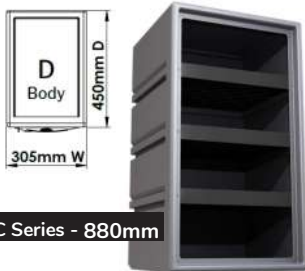
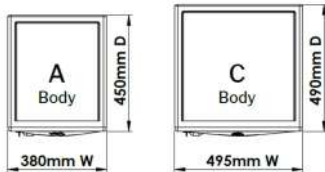
<b>Height</b>
880mm
1300mm

\*Stackable



Multiple divider options available

## Foot Print / Base Size



C Series - 880mm

\*Stackable



International Patent No. 1050325

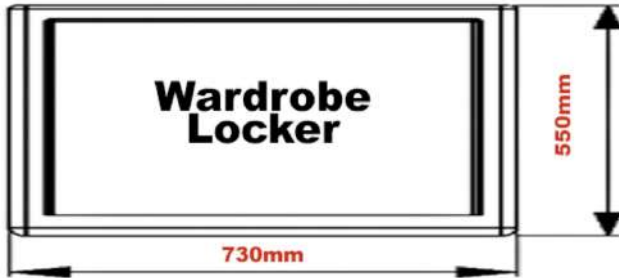
Slight size variation may occur due to manufacturing process. Speak to a sales consultant for more information.

Colours shown are indicative only and may vary due to printing.

Certain product may not be available in your area please, call or inquire online for clarification.

# Vented Wardrobe Locker

Base Sizes / Foot Print



- ▶ Constructed from polyethylene.
- ▶ Will not dent or rust.
- ▶ Resists knocks and bumps.
- ▶ No hinges to jam.
- ▶ Resistant to cleaning solvents.



- ▶ Graffiti, chewing gum or stickers can be removed without affecting the integrity of the enclosure.
- ▶ Available in a range of colours to suit your environment. Fitted with 3-way locking mechanism.
- ▶ Optional padlocks available.

Width: 730mm  
 Depth: 550mm  
 Height: 1937mm  
 (2237mm with top and base)



International Patent No. 1050325

Slight size variation may occur due to manufacturing process. Speak to a sales consultant for more information.

Colours shown are indicative only and may vary due to printing.

Certain product may not be available in your area please, call or inquire online for clarification.

# OL1800 Locker



## Base Sizes Foot Print



Constructed from polyethylene. Will not dent or rust. Resists knocks and bumps. No moving parts to maintain.

Resistant to cleaning solvents. Graffiti, chewing, gum or stickers can be removed without affecting the integrity of the enclosure.

Single door unit. Supplied with sloping top, base, shelf and hanging rail. Features a 3 way locking system. Resists being cut or jimmed open. Optional padlocks available.

Width: 370mm

Depth: 500mm

Height: 2000mm



Available in a range of colours  
to suit your environment.



International Patent No. 1050325

Slight size variation may occur due to manufacturing process. Speak to a sales consultant for more information.

Colours shown are indicative only and may vary due to printing.

Certain product may not be available in your area please, call or inquire online for clarification.

# Vented Lockers

OZLOKA® welcomes the newest member to our family of Heavy-Duty Lockers.

## The Vented Locker has arrived

Our Industrial and Sports customers asked us to create a high airflow locker

The Engineers and Production team come up with the unique Vented Locker.

### Accessories:

- ▶ Sloping Tops
- ▶ Shelves
- ▶ Bases
- ▶ Padlocks
- ▶ Hanging rail

### Cleanable:

Resistant to most cleaning solvents. Graffiti, chewing gum or stickers can be removed without affecting the appearance of the locker.

### Secure:

Resists being cut or jimmied open.  
Fitted with 3-way locking mechanism.



### Simplistic: Designed to be securely

closed with an appropriate padlock for maximum security. Optional padlock available.



**Stylish: Available in a range of colours to suit your environment.**

Size: W 380mm x D 450mm x H1720mm

# Tool Lockers

## Tool Locker 2300

Product Code: OLTL2300

Size: 1100mm W x 930mm D x 2060mm H  
Total Height Including Hood: 300mm

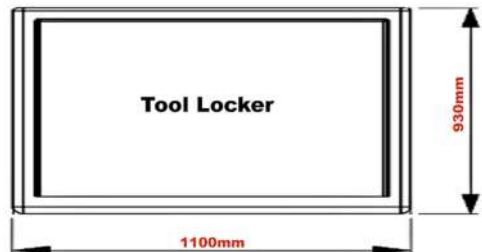
Our tool locker storage unit is designed to provide robust storage for a wide range of tools and equipment. Featuring a one piece rotationally moulded polyethylene construction gives the product impact durability and fantastic UV protection. The internal stainless steel shelf framing provides additional storage, the tool locker has padlock-able doors. This unit is easy to move and relocate.

Our tool locker storage unit has the ability to be configured to your needs. Contact us for your specific customisation requirements

- ▶ For tool trolleys, vacuum cleaners and roll cabinets
- ▶ Easy wheel in / wheel out
- ▶ Slide out shelf
- ▶ 3 way locking
- ▶ Polyethylene construction
- ▶ Can be configured to your requirements.



### Base Sizes / Foot Print



Colours shown are indicative only and may vary due to printing.  
Certain product may not be available in your area please, call or inquire online for clarification.

# PVC Storage - Racks - Benches

Our PVC extruded frames system allow you to design a custom solution for your locker bay or storage area.

The modular extruded frame system improves on a wood systems as the PVC components are sturdy, durable, corrosion resistant and UV stabilised .

Ideal for constructing:

- ▶ Tables
- ▶ Benches
- ▶ Racks
- ▶ Garage Storage



# Locker Colour chart



Monument  
8026



Dark Grey  
816



Grey  
FSP



Light Grey  
817



Mist Green  
206



Rivergum  
234



Slate Grey  
89



Heritage Green  
FSP



Stock Green  
209



Lime Green  
257



Wheat  
930



Merino  
918



Yellow  
18



Orange  
61



Red  
551



Heritage Red  
45



Magenta  
526



Purple  
538



Mountain Blue  
392



Teal  
338



Light Blue  
325



Stock Blue  
FSP



Dark Blue  
326



Black - White  
70 - 05

International Patent No. 1050325

Slight size variation may occur due to manufacturing process. Speak to a sales consultant for more information.

Colours shown are indicative only and may vary due to printing.

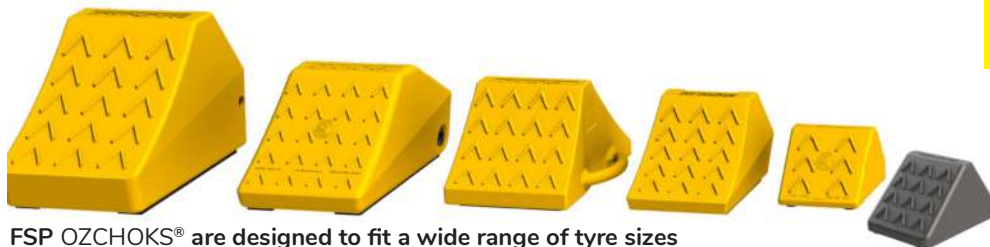
Certain product may not be available in your area please, call or inquire online for clarification.





## Wheel Chocks Heavy-Duty Plastic

Heavy Duty Plastic Wheel Chocks are available in a standard colour of yellow with other colours available on request. Traction pads are fitted to our OZCHOKS® for safer usage.



FSP OZCHOKS® are designed to fit a wide range of tyre sizes

- ▶ Always use an adequate number of chocks as per your risk assessment.
- ▶ Always place chocks on solid surface with vehicle stopped / park brake on.
- ▶ Always place chocks squarely against the centre of tyre.
- ▶ Use contradictory to instructions may cause product failure/personal injury.
- ▶ NEVER use damaged chocks.
- ▶ NEVER drive over a chock.

Operator MUST comply with manufacturers safe operation pre-check manual.

**Safety Alert:** FSP Australia Pty Ltd & FSP New Zealand Ltd takes no responsibility for the negligence of users of our OZCHOKS® who do not carry out a safety check to ensure that the chock is intact prior to use.



DESIGN REG 127909

\*OZCHOKS products are not for public road usage

Colours shown are indicative only and may vary due to printing.

Certain product may not be available in your area please, call or inquire online for clarification.

## Wheel Chock Range



**OZCHOKS® 050** - Product Code: OZCC050

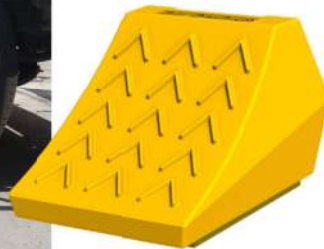
Size: 210mm W x 284mm L x 165mm H -Weight: 1.9kg



**OZCHOKS® 055** - Product Code: OZCC055

Size: W 210mm x L 290mm x H 165mm - Weight: 1.5kg

Passed testing by 3rd party laboratory holding 3000 kg without movement on a 15 degree slope.



**OZCHOKS® 065** - Product Code: OZCC065

Size: 280mm W x 370mm L x 230mm H -Weight: 4kg

Colours shown are indicative only and may vary due to printing.

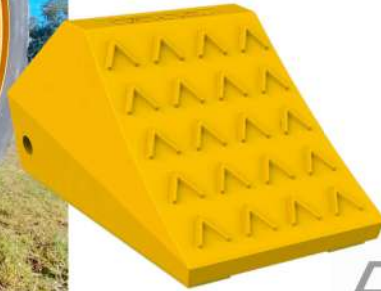
Certain product may not be available in your area please, call or inquire online for clarification.



**OZCHOKS® 075** - Product Code: OZCC075-2

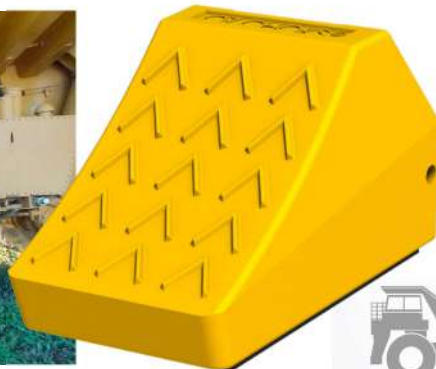
Size 420mm W x 465mm L x 260mm H- **Weight:** 8kg

Designed for dual axle vehicle.



**OZCHOKS® 105** - Product Code: OZCC105

Size 380mm W x 560mm L x 280mm H- **Weight:** 16kg



**OZCHOKS® 155** - Product Code: OZCC155

Size 420mm W x 660mm L x 410mm H- **Weight:** 18kg

Colours shown are indicative only and may vary due to printing.

Certain product may not be available in your area please, call or inquire online for clarification.

# Poly Mounting Brackets

- ▶ A security retaining strap is an option to hold the chock in place securely to avoid accidents and injuries
- ▶ Easily attached to vehicle using preformed secure points
- ▶ Corrosion and rust resistant
- ▶ Available in all sizes
- ▶ Lanyard (optional)



Chock Bracket to suit  
**OZCHOKS® 055 & OZCHOKS® 050**

Product Code: OZCHB055



Chock Bracket to suit  
**OZCHOKS® 065**

Product Code: OZCHB055



Chock Bracket to suit  
**OZCHOKS® 075**

Product Code: OZCHB075-2

\*OZCHOKS® products are not for public road usage

Colours shown are indicative only and may vary due to printing.  
Certain product may not be available in your area please, call or inquire online for clarification.



**Chock Bracket to suit OZCHOKS® 105**

Product Code: OZCHB105



**Chock Bracket to suit OZCHOKS® 155**

Product Code: OZCHB155

A full range of mounting brackets and trolleys are available to suit all wheel chock sizes.



**Chock Storage Rack (Quad)**

Product Code: OZCHSR4



**Chock Storage Stand**

Product Code: OZCHSS



**Chock Storage Rack (Twin)**

Product Code: OZCHSR2

## Trolleys for OZCHOKS®

155 Stainless Steel Trolley

Product Code: OZCHTR155



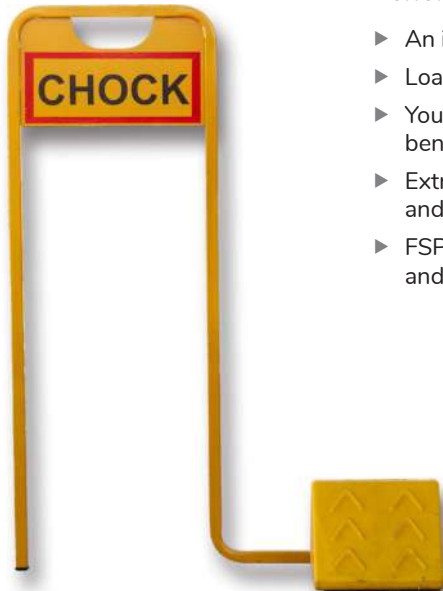
155 Trolley with Chock Release

Product Code: OZCHTQR155B

## Warning stand - 055 & 065 Wheel Chocks

Product Code: OZCC055YSTSIGN

Size: 210mm W x 290mm L x 165mm H - Weight: 2kg



### Benefits

- ▶ An industry first safety product
- ▶ Loading docks just got safer
- ▶ Your back now says thanks. No more difficult bending down for your chocks
- ▶ Extra piece of mind for drivers. Look into the mirror and know your chock is in place
- ▶ FSP leading the way in safety for your loading bays and saving you money.



## Drill Chock

Product Code: OZCMDRI

Solid, transportable Drill Chock aids in the elevation of heavy equipment for loading onto floats. These units can be stacked for larger lift heights to reduce the accidental damage to machinery.

Size:

600mm W

600mm D

25mm to 175mm H

Weight: 41kg



## Ripper Chock

Product Code: OZCMRCHC

Polyurethane Block for aiding in the replacement of Dozer Ripper Boots.

Weight: 18kg



## Ripper Pad

Product Code: OZCMRIPP

Polyurethane Pad for resting and protecting surfaces underneath a ripper.

Size: 400mm W x 400mm D x 45mm H

Handle ø70mm

Weight: 5kg



# Speed Humps

Product Code: SPSPD

We have increased our product range to include a larger range of speed humps. When we make recommendations about speed humps we look at the volume, speed and type of traffic going over the speed hump. Also taken into account is the surface the speed humps are being attached to and whether or not the speed humps are temporary, permanent, semi-permanent or even portable.



We offer a large range of speed humps in a variety of models and sizes to accommodate your specific requirements.

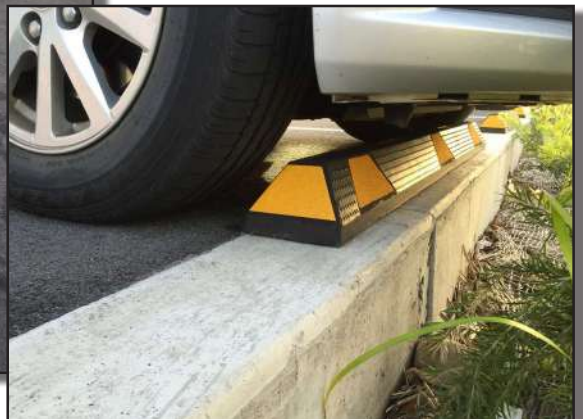
# Parking Stop

Product Code: SETS

Size: 1630mm L x 140mm W x 100mm H

Weight: 15kgs

- ▶ Made of 100% recycled rubber
- ▶ Black color with yellow bead strip
- ▶ Superior strength
- ▶ Reflective tape ensures maximum visibility even at night





# Cable Protection

Suspend or protect your electric cables and air lines and prevent them from becoming damaged by utilising FSP cable products. FSP's Cable products are made from heavy-duty polyurethane and are UV stabilised, light weight and durable..

## Cable Cover Ramp

Product Code: CCCO65YEL

Size: 1010mm L x 530mm W x 65mm H

Channel Size: 30mm W x 60mm H



## Cable Cover Cross over Bridge

Product Code: CCB120YEL

Size: 750mm W x 480mm D x 180mm H

Size: Channel up to 120mm



## FSP Cable Horse (Fence)

Product Code: CCF450YEL

Designed for shovel and dragline cables.



## FSP Cable Horse 900 (Fence)

Product Code: CCF900YEL

Size: 900mm W x 900mm D x 800mm H

Designed for shovel and dragline cables.



# Drill & Blast

DESIGN REG 348490

- Colour Coded • Non Lock Stacking • Light Weight with Hand Grip
- Standard Colours  
(Others colours on request)

MINING



## Hole Savers Drill & Blast



**Hole Saver 65**  
Product Code:  
**HS065**

Base: ø 65mm  
Top: ø 195mm  
Height: 400mm



**Hole Saver 75**  
Product Code:  
**HS075**

Base: ø 75mm  
Top: ø 190mm  
Height: 410mm



**Hole Saver 100**  
Product Code:  
**HS100**

Base: ø 100mm  
Top: ø 250mm  
Height: 600mm



**Hole Saver 160**  
Product Code:  
**HS160**

Base: ø 160mm  
Top: ø 330mm  
Height: 800mm



**Hole Saver 200**  
Product Code:  
**HS200**

Base: ø 200mm  
Top: ø 450mm  
Height: 800mm

# Cable Plug Protector

Product Code: CCPXXKIT

## Dragline, Face Shovel Cable Plug Protector

- ▶ Made from rotationally molded polyethylene
- ▶ Reduces terminal damage
- ▶ Protects against rock damage, high wall recovery and accidental damage during transport
- ▶ UV and impact resistant
- ▶ Multi fit design



## Work Platform

Product Code: WP500

- ▶ Sturdy.
- ▶ UV Stabilised.
- ▶ Light Weight.
- ▶ Corrosive resistant.
- ▶ Moulded non slip tread.
- ▶ Handles for easy mobility.
- ▶ Rotationally Moulded

Size:  
530mm W  
780mm D  
480mm H



## Engine Bay Ladder

Product Code: RT830EEBLT

- ▶ Increases safety
- ▶ To suit the Komatsu 830E



## Engine Bay Ladder

Product Code: RT830EEBLRHL

- ▶ Increases safety
- ▶ To suit the Komatsu 830E



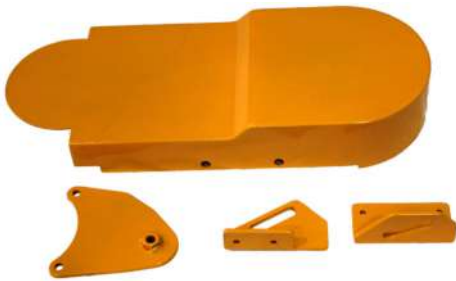
# Customised Engine Components Guards Covers & Parts

## Common features

- ▶ Reduces maintenance and damage
- ▶ Suit Komatsu 830E
- ▶ Custom sizes available for other machinery models
- ▶ Increases safety
- ▶ Steel or Poly available

## Flexible belt cover

Product Code: RT830EACCGCK.



## Alternator Guard

Product Code: ALTNAGB



## Alternator Cover

Product Code: VAACCATP.



## Belt Cover

Product Code: ALTB830E



### Alternator Belt Cover

Product Code: ALTB830EP



### Alternator Guard

Product Code: ALTLIEBR9350



### Alternator Guard - Poly

Product Code: ENG15636



### Alternator Cover - Poly

Product Code: VAACCATP



### Alternator Guard

Product Code: ALTNAGCK



## Axle Box Chain Kit

Product Code: ABCKWK.



## Fire Suppression Bracket

Product Code: VA50LFSBRED.

50ltr fire suppression tank bracket.



# Hungry Boards

Hungry boards are designed to reduce weight and increase payload. They are lightweight, weather resistant and easy to replace. Mirror protectors, rock deflectors (patent pending) and head boards also available.



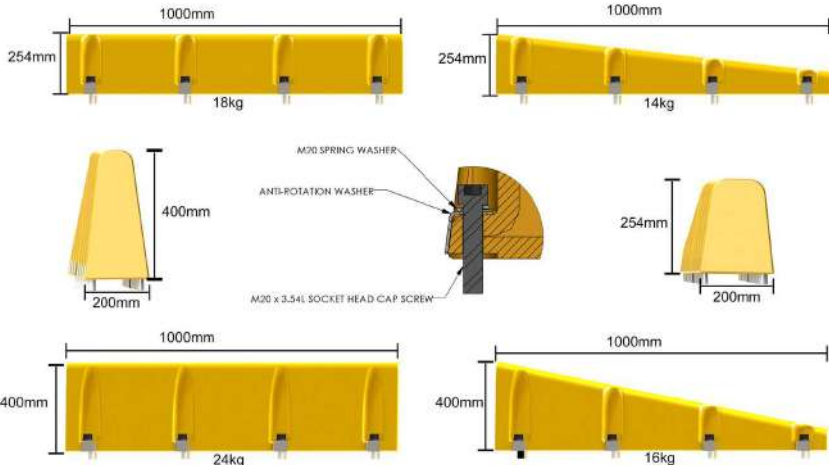
**FEED YOUR TRUCKS MORE!**

## HEAD BOARDS PRE-INSTALLATION



Customer Feedback  
*“It’s been a great success in reducing accidental damage and has reduced down time”*

### Hungry/Head Boards - Sizes



Weights may due vary material grind

Colours shown are indicative only and may vary due to printing.  
 Certain product may not be available in your area please, call or inquire online for clarification.

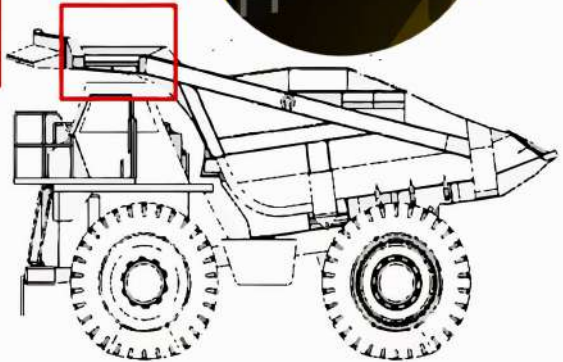
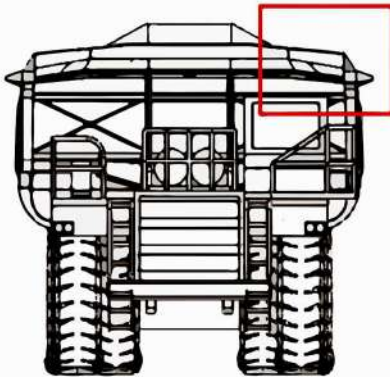




## Customer Feedback

“Better visibility at night, Less chance of rocks spillage”

## HEAD BOARDS PRE-INSTALLATION



FSP Head Boards significantly aid in reducing the damage by the material transported. FSP's polyethylene Hungry Boards are lighter than traditional steel. They allow you to increase payload and help in the reduction of damage, thus maximising the potential of your haul truck.

Once installed our Hungry Boards assist in dramatically reducing the damage caused by rocks. Overburden falling over the cab of the haul truck and destroying ladders, suppression systems and tyres can be overcome with the Hungry Board system. They are manufactured from our Hi-Vis yellow polyethylene hybrid and is UV stabilised and robust.

In the unlikely event of damage, only the damaged section needs replacement. Each section is a simple one-person in-field replacement. No Hot Work Permit is required. Downtime is minimal, as the vehicle does not need moving off-site.

# Wheel Motor Covers

- ▶ Quick release button for inspection panel (image 1) for easy caliper and brake inspections (product A)
- ▶ Reflective strip (product A)
- ▶ Polycarbonate lid (image 2) A
- ▶ UV stabilised (products A,B&C)
- ▶ Vented sides (products A,B&C)
- ▶ Heavy duty locating lugs (product A)
- ▶ Custom built options available
- ▶ 4 fastening clamps (includes lock-in pin) (products A,B&C)

## Removable Front (Poly)



CODE: VAWMC788PA

## Details



Image

1



Image

2

## Standard (Poly)

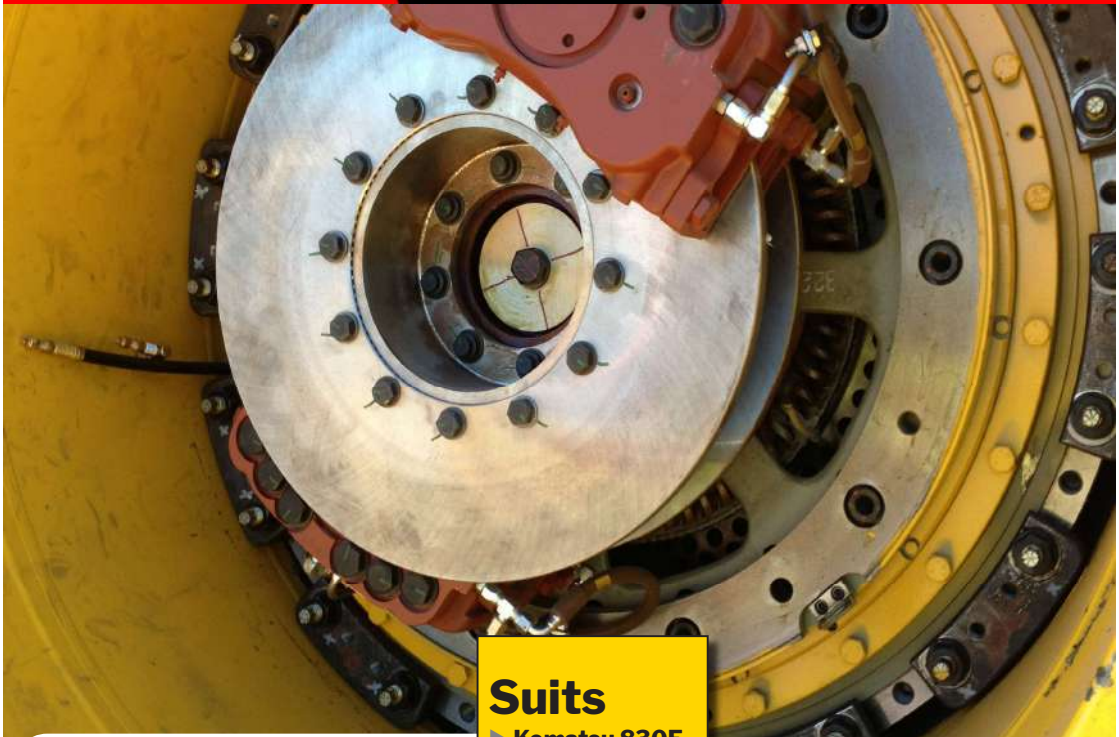


CODE: VAWMC788P

## Fibreglass Model



CODE: VAWMC788FYEL



## Suits

- ▶ Komatsu 830E
- ▶ Komatsu 730E



# Mining Vehicle Fire Safe Engine Cover

Product Code: VAFSB785FL



## FSP Firesafe Engine Cover

### Origin

Born out of a safety requirement to protect the drivers in the instance of an engine fire, so they may escape safely over the FSP engine cover.

### History

In use in the mining industry since January of 1995.

In 1997 FSP was awarded with the contract of the upgrading and fire proofing of Caterpillar Mining trucks throughout Australia.

# Rooftop ID Number

Product Code: ROOFIDL-NUM\*

- ▶ Made from tough rotationally moulded polyethylene, 5mm wall thickness
- ▶ Light-weight
- ▶ One piece (no breakage points)
- ▶ Class One Reflective Decals
- ▶ Available with magnets for easy mounting (not for public road use)
- ▶ 2 sizes Available
- ▶ Reinforced Corners

2 Size available  
300mm W x 200mm H  
600mm W x 400mm H



\*Not for public road use

# Delineation Posts

Product Code: WINDELPOST3000

Size: 120 W x 3000 H x 60 mm ø

**Day**



**Night**



Base



## Features

- ▶ UV protection PVC plastic.
- ▶ Non twisting in-ground design.
- ▶ Multiple colour picket pockets available.
- ▶ Decal lettering option.
- ▶ Removable reflective picket.
- ▶ Light weight.
- ▶ White in colour for extra visibility.
- ▶ Night reflective picket pocket.
- ▶ Post fits over standard star picket.

Decals



Colours



\* Custom lengths available.

Colours shown are indicative only and may vary due to printing.  
Certain product may not be available in your area please, call or inquire online for clarification.

## Picket Pockets

Product Code: SEP

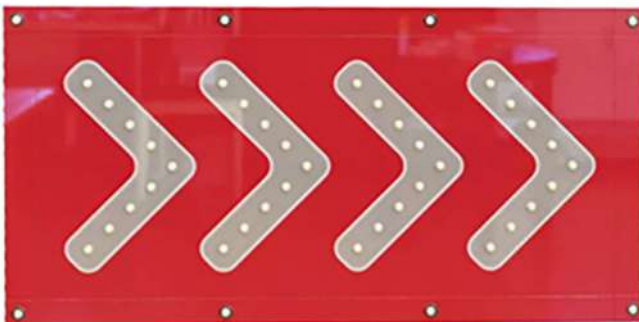
FSP picket pockets are used in the delineation and demarcation of haul roads and intersections, blasting areas and for general safety.

- ▶ Prismatic high brightness materials
- ▶ Vinyl construction
- ▶ Wide angle performance
- ▶ Superior durability
- ▶ We offer custom sizes on request
- ▶ Florescent colours available for extra visibility during the day and in adverse weather conditions



## Heavy duty PVC Red banner

Product Code: SERAB



# Mine Hanging Streamers

**Product Code: SESD5**

Long Distance, Superior Brightness & Colour

Research has proven that colour and long distance visibility play a major role in safety. By making work areas more visible, we can reduce the risks of death and injury. Mine hanging streamers and tags are a unique way of delineating underground roadways.

Features: Double sided (can be seen in both directions), Reflects colour (colour coding for different applications), Attach with ease (Eyelets, magnets and press studs).

Mine hanging streamers are available in many configurations. Custom made to your requirements. Any Length, Standard width 50mm, reinforced and non-reinforced, 10 colours available, two colour combinations, Eyelets and press studs, Weighted, Magnetic, Computer cut lettering applied.



# Mine Hanging Tags

**Product Code: SEMHT**

Mine Hanging tags are available in standard sizes.

There are 10 colours available and sizes can be customised to suit your needs.





## Tool Boxes



STORAGE

- ▶ Dust Sealed
- ▶ Self Return Carry Handles
- ▶ Partitioned for convenience
- ▶ Clear Document Holder in Front Panel
- ▶ Concealed Space for Anti-Tamper Seal



**Fenzy Box Blue**

Product Code: UGFBDDBE

Size: 1030mm W x 435mm D x 535mm H



**Fenzy Box Green**

Product Code: UGFBSGN

Size: 1030mm W x 435mm D x 535mm H

## Dog Box

Product Code: TBXDDB5

Size: 995mm W x 497mm D x 495mm H



## OZBOX®

### OZBOX® 1200

Product Code: TBX0B1200

Size: 1210mm W x 540mm D x 795mm H

- ▶ 3 Way Locking System
- ▶ Weather Sealed
- ▶ Gas Struts
- ▶ Light Weight and Durable



## Poly Tool Boxes

Product Code: TB160 & TB90

- ▶ Rotational structure of integrated products, high strength, solid and durable
- ▶ Easy to transport
- ▶ Built to last
- ▶ Waterproof, Dust-proof, Airtight



**Sizes available:** 90 ltr (above)  
- 110 ltr - 1000 ltr models

## Head Board Water tank

Product Code: ENG-17029

- ▶ Rotationally Moulded Polly
- ▶ 2 inch fill Point
- ▶ 3/4 drain
- ▶ M8 inserts (fill points)



Size: 1540mm L x 375mm W x 76mm D

# Battery Storage Box

- ▶ Hot dipped galvanized frame
- ▶ Cladded with Gal Sheeting
- ▶ Pitched Roof. Bearing Slides
- ▶ Stainless steel vents
- ▶ Roller shutter (Grey)
- ▶ Slide out Draws with Handle
- ▶ Spring Bolts & ACID Logo
- ▶ Bundled pallets comes with Drain hole
- ▶ 4 x M20 Hold Down Points



**Battery Storage Box**

**Product Code: BBXBSB**

Size: 1550mm H x 1500mm W x 1200mm D



**Roller Bearing Draw**



**Roller Shutter Draw**

## Battery Box

Recessed Lockable Catches, Recessed Ventilation,  
Tie Down Handles, Aluminum Location Strips,  
Suitable for Forklift Use, Fibreglass Battery Case,  
Full Battery Box should only be stacked 2 high.



## Fibreglass Battery Box

Product Code: BBXFGBX

Size: 1300mm W x 1200mm D x 440mm H



## Stainless Steel Battery Box

Product Code: BBXSSBX



# Flammable Storage



## Flammable Storage Cabinet 160 \*

Product Code: CFL160L (160 Litre)

Supplies with 2 Shelves

Holds 6 x 20 Litre Drums

Size: 1230mm H x 1100mm W x 465mm D



## Flammable Storage Cabinet 250 \*

Product Code: CFL250L (250 Litre)

Supplied with 3 Shelves

Holds 9 x 20 Litre Drums

Size: 1760mm H x 1100mm W x 465mm D



## Flammable Storage Cabinet 350

Product Code: CFL350L (350 Litre)

Holds 15 x 20 Litre Drums

Size: 1760mm H x 870mm W x 870mm D

**Other sizes available**

# Corrosives Storage



- ▶ Fully welded construction using
- ▶ 1.2mm steel
- ▶ Double wall
- ▶ 40mm thermal barrier
- ▶ Electrostatic high gloss powder coat
- ▶ Paint finish
- ▶ Dual vents with built in flash arresters.
- ▶ 3 point locking mechanisms
- ▶ Sequential self closing & latching doors
- ▶ Leak proof fully welded 150mm deep containment sump
- ▶ Shelves with built in troughs
- ▶ Adjustable shelves
- ▶ Adjustable leveling feet to prevent
- ▶ Doors binding



## Corrosives Storage Cabinet 160

Product Code: CCS160L (160 Litre)

Steel Storage Cabinet

Supplied with 2 shelves

Holds 6 x 20 Litre Drums

Size: 1230mm H x 1100mm W x 465mm D

**Other sizes available**



## Corrosives Storage Cabinet 250

Product Code: CCS250L (250 Litre)

Steel Storage Cabinet

Supplied with 3 shelves as standard

Holds 9 x 20 Litre Drums

Size: 1760mm H x 1100mm W x 465mm D

## Document Storage Boxes

Our weather resistant polyethylene cases are durable and rustproof. Labels adhere to smooth surface for easy identification of contents. The document storage boxes are ideal for holding material data safety sheets

(SDS), site work instructions, and / or equipment manuals. Boxes come with rear mounting holes for easy fixture to existing structures. Two sizes are available



### Document Storage Box

**Product Code: DBXSTDXM**

Suitable for Letter or A4 paper size.

Size:

Internal:  
222mm W x 41mm D x 292mm H

External:  
260mm W x 57mm D x 318mm H

### Document Storage Box Large

**Product Code: DBXLRGF**

Suitable for large A4 or Foolsap document binders.

Size:

Internal:  
263mm W x 57mm D x 357mm H

External:  
340mm W x 90mm D x 400mm H

### Hexagonal Storage Tub

**Product Code: HEXTUB**

Suitable for workshop nuts, bolts and other smaller item storage.

- ▶ Stackable
- ▶ Heavy-Duty (rotationally moulded)
- ▶ 25 colours available
- ▶ UV stabilised
- ▶ Labeling area

Size: 400mm L x 250mm W x 250mm H



Sold as Individual Units

# Spill Caddy

The drum management system meets safety and environmental protection requirements while organising drum storage for maximum efficiency, productivity and cost savings.

The design accommodates either 60 or 205 Litre drums of flammable and combustible liquids. UV protected polyethylene construction provides maximum chemical compatibility and resistance preventing corrosion and deterioration, assuring a long lifetime of service.

Moulded drum lock channels hold drums in place. Optional strapping can be slipped through hold-down slots for additional safety or transport by forklift.

The system consists of three modules: base, stack and dispensing shelf.



## Spill Containment Caddy System 200

**Product Code: SPILLCAD200**

Sump Capacity: 205 Litres

Load Bearing Capacity: 275Kg

Size:

810mm W

1840mm D

680mm H



## Spill Containment Caddy System 400

**Product Code: SPILLCAD400**

Includes base stacking module and dispensing shelf



## Drum Cover Lids

Drum Cover Lid

200 Litre

Product Code: OILDL

Drum cover to suit  
200L drums.

20L also available



**NEW DESIGN**  
Now Stackable



## Spill Pallets



**FSP Spill Pallet 80 Litre**

Product Code: OILSP080STK

Bunded spill pallet designed to hold:

4 x 20 Ltr Drums

Sump Capacity: Approx 50Ltr

Size:

670mm W

670mm D

240mm H

## Spill Pallets (cont)



### FSP Spill Pallet 400 Litre

**Product Code:** OILSP400

Bunded spill pallet designed to hold:

2 x 200Ltr Drums

Sump Capacity: Approx 200Ltr

**Size:**

300mm W

700mm D

380mm H

### FSP Spill Pallet 600 Litre

**Product Code:** OILSP600

Bunded spill pallet designed to hold:

3 x 200 Ltr Drums

Sump Capacity: Approx 300Ltr

**Size:**

1850mm W

640mm D

290mm H



### FSP Spill Pallet 800 Litre

**Product Code:** OILSP800

Bunded spill pallet designed to hold:

4 x 200 Ltr Drums

Sump Capacity: Approx 390Ltr

**Size:**

1350mm W

1350mm D

380mm H

# Oil Trolleys

## Oil Trolley 350 - Blow Moulded

Product Code: OILT350

- ▶ One piece LDPE construction
- ▶ Stainless steel fittings
- ▶ 350ltr spill containment
- ▶ Foot jack for braking
- ▶ Removable anti-skid work platform
- ▶ Solid filled tyres for easy maneuverability
- ▶ Plug to make oil disposal easy



**350 Ltr**



Foot Jack for  
Braking Included



350 Ltr Sump Capacity  
Size: 950mm W x 1900mm L x 500mm H  
Weight 90kg

**100 Ltr also available**

# Oil Trolleys (cont)

## Oil Trolley 150- Blow Moulded

Product Code: OILT150

- ▶ One piece LDPE construction
- ▶ Stainless steel fittings
- ▶ 150ltr spill containment
- ▶ Foot jack for braking
- ▶ Removable anti-skid work platform
- ▶ Solid nylon castors
- ▶ Collapsible handle
- ▶ Plug to make oil disposal easy
- ▶ 1" male BSP threaded suction pipe
- ▶ 1" female drain bung



**150Ltr**



Solid Nylon Castor



150 Ltr Sump Capacity  
 Size: 650mm W x 1500mm L x 310mm H  
 Weight 45kg

**100 Ltr also available**

# Fire Extinguisher Cabinets

Fire Extinguisher Cabinets come standard with the viewing window.

003 Locks & Break glass are optional extras available on request.

- ▶ UV stabilised .
- ▶ Will not rust.
- ▶ Sight glass for gauge inspection.
- ▶ Optional locking/non locking t-handles.
- ▶ Drain hole in base.
- ▶ Fitted with a step, to assist with the removal of the extinguisher.

FIRE



**BLOW  
MOULDED**



**Fire Extinguisher Cabinet 450BM**

**Product Code: CFE0450RED-BM-NL**

360mm W x 310mm D x 720mm H

Cabinet holds 4.5kg fire extinguisher

**Fire Extinguisher Cabinet 800BM**

**Product Code: CFE800**

320mm W x 309mm D x 800mm H

Cabinet holds 9kg CO2 fire extinguisher

**Fire Extinguisher Cabinet 900BM**

**Product Code: CFE0900RED-BM-L**

430mm W x 310mm D x 940mm H

Cabinet holds 9kg fire extinguisher



**ROTATIONALLY  
MOULDED**



**Fire Extinguisher Cabinet 450**

**Product Code: CFE0450RED**

320mm W x 320mm D x 660mm H

Cabinet holds 4.5kg fire extinguisher

**Fire Extinguisher Cabinet 900**

**Product Code: CFE0900RED**

320mm W x 320mm D x 820mm H

Cabinet holds 9kg fire extinguisher

**Double Fire Extinguisher Cabinet**

**Product Code: CFE1800RED**

570mm W x 300mm D x 800mm H

Cabinet holds 2 x 9kg fire extinguisher

Colours shown are indicative only and may vary due to printing.

Certain product may not be available in your area please, call or inquire online for clarification.

# Fire Hose Reel Cabinets

## TWO DOOR Fire Hose Reel Cabinet

**Product Code:** HRCDD

Size: 1060mm W x 470mm D x 1220mm H

Available in Blue for Foam

Other colours, decals and stands available on request



## Fire Hose Cabinet Options

- ▶ Galvanized Hose Hanger
- ▶ Stand (Mild steel, Galvanised or Stainless Steel)
- ▶ Internal hardware brackets (can be customised for your equipment)
- ▶ Available in Blue for foam
- ▶ Other colours on request

## Cabinet Stand for Single Door Fire Hose Reel Cabinet

Galvanised Steel Stand & Stainless Steel available
--

**Product Codes:**  
HRCSDGS and HRCSDSS

(To suit HRCSDRED)

Size: 850mm W x 400mm D x 600m H  
(Stand Height)

**\*Stand available for**

**Two Door Fire Hose Reel Cabinet HRCDD**

## SINGLE DOOR Fire Hose Reel Cabinet

**Product Code:** HRCSDRED

Size: 850mm W x 400mm D x 1000mm H

Available in Blue for Foam.

Other colours available on request



### Internal hardware - Options

Available for Single door Hose Reel Cabinet and Two Door Hose Reel Cabinets.

Customisable internal hardware layouts available



## Fire Depot Cabinet

**Product Code:** FSDSDRED

Suitable for 3 Lay Flat Hoses

Component compartment below

Size: 430mm W x 580mm D x 1760mm H



Internal Layout



# Underground Depot Boxes

Product Code: UGFDB

Mobile and Stationary models available.

Constructed using marine grade latches, stainless steel piano hinges, moulded hand grips (mobile version) and dust seal.



Size: 800mm W x 600mm D x 790mm H

## Available in mobile and stationary models

Key Aspects of the Underground Fire Depot Box:

(Mobile model features in GREEN)

- ▶ Concealed space for anti-tamper seals
- ▶ **Stainless steel carry handles for 2 person operation**
- ▶ **Telescopic Stainless Steel handle for single person placement**
- ▶ Fixed hardware tray
- ▶ **Oversized tyres to assist in maneuvering over rough terrain**
- ▶ UV Stabilised.
- ▶ Corrosion Resistant
- ▶ **Low centre of gravity**
- ▶ Easy reach to bottom of box
- ▶ Can hold 4 x 20lt foam concentrates
- ▶ Holds pick up branch pipe and spear
- ▶ Your choice of wording
- ▶ Can be supplied with your nominated fire fighting mediums
- ▶ Robust and Durable



# Fire Extinguisher Bracket

Product Code: FEVMRED

Suits multiple sizes of extinguisher.

- ▶ UV Stabilised Polyethylene with clear Polycarbonate Face
- ▶ White Reflective Decals - "FIRE EXTINGUISHER"
- ▶ Weather Resistant
- ▶ Adjustable Inner Retainer Strap (for extinguisher)
- ▶ Easily Accessible

Size: 300mm W x 300mm D x 720mm H



Colours shown are indicative only and may vary due to printing.  
Certain product may not be available in your area please, call or inquire online for clarification.

# Portable Extinguisher Stand

Product Code: CFESTAND

The portable Fire Extinguisher Stand can hold up to a 9kg fire extinguisher.

Size: 488mm W x 488mm D x 750mm H

- ▶ Ideal for temporary stand when OH and S requires ready access to extinguishers.
- ▶ Solution for temporary extinguisher locations on wharves, loading areas, mine sites and factory floors, construction sites and events.
- ▶ White reflective decals - "Fire Extinguisher".
- ▶ Rotationally moulded using tough polyethylene plastic.
- ▶ Base has three feet allowing it to stand on un-even surfaces.
- ▶ Able to be stacked.
- ▶ Used on many construction sites and festivals.





Stackable



# Fire Hose Reels - Heavy Duty

## Hose Reel 500

Product Code: HR500 (19C/25C)

Reel Diameter: 520mm

Reel Depth: 300mm



### FEATURES

- ▶ Roto moulded UV stabilised polyethylene drum
- ▶ Stainless steel internal with Dual quad ring sealing. Tested to 400 PSI
- ▶ Sealed bearings
- ▶ Hose Capacity:  
50m x 12mm hose  
36m x 19mm hose  
20m x 25mm hose
- ▶ Custom option available
- ▶ Black PVC hose conforming to AS1221. Working pressure of 145 PSI
- ▶ Optional Brass/Rubber Adjustable spray nozzle jet and fog

## Fire Hose Reel 600

Product Code: HR600 (19C/25C)

Reel Diameter: 600mm

Reel Width: 300mm



### FEATURES

- ▶ Roto moulded UV stabilised polyethylene drum
- ▶ Stainless steel internal with Dual quad ring sealing. Tested to 400 PSI
- ▶ Sealed bearings
- ▶ Hose Capacity:  
50m x 19mm hose  
30m x 25mm hose
- ▶ Custom option available
- ▶ Black PVC hose conforming to AS1221. Working pressure of 145 PSI
- ▶ Brass/Rubber Adjustable spray nozzle

DESIGN REG. 12930



Colours shown are indicative only and may vary due to printing.  
Certain product may not be available in your area please, call or inquire online for clarification.

# Fire Hose Reel 700

Product Code: HR700 (19C/25C)

Reel Diameter: 700mm

Reel Width: Adjustable

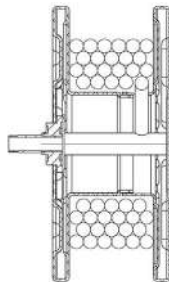
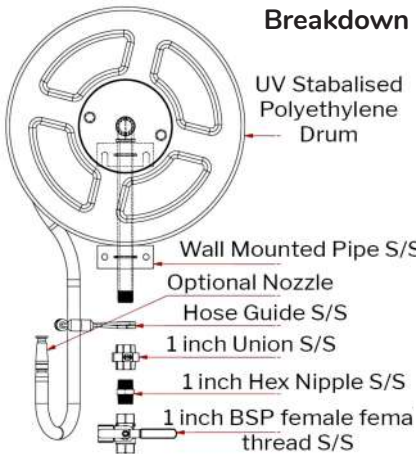
Not wall mountable



## FEATURES

- ▶ Roto moulded UV stabilised polyethylene drum
- ▶ Stainless steel internal with Dual quad ring sealing. Tested to 400 PSI
- ▶ Sealed bearings
- ▶ Hose Capacity:  
Hose 38mm  
Adjustable width
- ▶ Custom option available
- ▶ Optional Brass/Rubber Adjustable spray nozzle  
jet and fog
- ▶ Standard Left Hand water entry - Right water  
entry available on request
- ▶ Other Nozzle options available on request

### Breakdown



Thermo Plastic Housing - S/S bearing



Different Colours Available



# Underground Mobile Hose Reel

Product Code: HRM700/19-25C

Size: 760mm W x 800mm L x 930mm H

Weight: Empty - 140kg - 190kg Charged

## Construction:

- ▶ Durable frame coated signal red
- ▶ rhs skids
- ▶ Tow & lift lugs
- ▶ Stainless steel waterway
- ▶ Cast bearing (grease-able)
- ▶ Reinforced polyethylene drum
- ▶ PVC fras rated hose (130m/19mm)
- ▶ Adjustable nozzle
- ▶ Isolation valve
- ▶ Stainless steel crank handle (2 person operation for hose retrieval)



## HOSE OPTIONS:

120m x 19mm

100m x 25mm

Further hose options available

25mm. Tested at 2100kpa (300psi)

# Fire Hose Reel Trolley

Product Code: HR500XXXTXXX

Complete with:

- ▶ Heavy Duty Hose Reel
- ▶ Gal Cradle (painted Signal Red)
- ▶ 4 x 75mm Castors
- ▶ Fold Down Handle
- ▶ Drum Stop

Portable



## Double Sided Fire Hose Reel Cradle

Product Code: HRX00XXXTXX

- ▶ Crafted from Stainless Steel
- ▶ Available in a single or double sided configuration
- ▶ Supplied with a spring loaded rewind handle
- ▶ The cradle can be safely mounted to the floor or a wall

Truck and Vehicle



## Lay Flat Hose Storage Cradle

Product Code: HRX00XXXTXX

- ▶ Designed to hold flat hose neatly with adjustable width for different hose sizes
- ▶ UV Stabilised

Storage



## Cable Reel

Product Code: HRCABLEY

- ▶ Rotationally moulded polyethylene.
- ▶ Fitted with a rewind handle.
- ▶ Designed to hold 500m of bunting.
- ▶ UV Stabilised
- ▶ Perfect for applications where large quantities of bunting needs to be managed.

Bunting Management



# Fire Hose Reel Cover



## Fire Hose Reel Cover 36

Product Code: HRC36

To suit hose reels with up to 36m of 19mm hose.

Protects Hose from UV damage, dirt and corrosion, prolonging the life of the hose  
Available in white

Internal Dimension:

600mm L x 250mm D x 615mm H



## Fire Hose Reel Cover 50

Product Code: HRC50

To suit hose reels with up to 50m of 19mm hose. Available in white

Internal Dimension:

590mm L x 315mm D x 620mm H



## Galvanized Hose Reel Stand

(Optional Hose Hanger)

Product Code: HR500STANDASSY

Galvanised Fire Hose Reel Stand.

(Available in Stainless Steel).

Stable with large signage for clear visibility.

Suits all hose reel types, available with an optional hose hanger. (Hoses reel sold separately)



# Multi-Purpose Cabinets

Colour and wording of your choice -

A range of colours available and wording can be adapted to suit your specific needs.

## Multi Purpose Cabinet-Regular

**Product Code: MPC01**

580mm W x 250mm D x 580mm H



## Multi Purpose Cabinet-Large

**Product Code: MPC02**

580mm W x 370mm D x 580mm H



## First Aid Cabinet

**Product Code: MPC01**

580mm W x 250mm D x 580mm H

## PPE Cabinet

Solid Door

**Product Code: MPC01**

580mm W x 250mm D x 580mm H



## PPE Storage Cabinet

Clear View Door

**Product Code: MPC01**

580mm W x 250mm D x 580mm H



**All cabinet available in a variety of colours and decals - Stands Available**

Colours shown are indicative only and may vary due to printing.

Certain product may not be available in your area please, call or inquire online for clarification.

# Multi-Purpose Cabinets

- ▶ Our flexibility allows us to offer you a huge range of cabinets in various sizes and colours to suit your particular needs
- ▶ You choose the size and colour, advise us of any wording you may require and we do the rest
- ▶ Where security is an issue we can provide lockable handles / non lockable / 003 locks are available

## Breathing Apparatus Cabinet

Product Code: CFE0900

Size: 320mm W x 320mm D x 800mm H

## Eye Wash Cabinet

Product Code: CFE0900-B

Size: 320mm W x 320mm D x 800mm H



## Cabinet Stands

Product Code: MPCSTAND

Stands available to suit CFE and MP cabinets.

# Safety Flags

## SAFETY FLAG KIT

Product Code: SFLAGKIT\*

Includes 4 piece pole, flag, coupling and mount spring. Modular system.



# SAFETY FLAGS<sup>®</sup>

**SAFETY**

### Kit Components



#### FLEXIBLE SPRING MOUNT

Product Code: SFPSRGM



#### QUICK RELEASE COUPLING

Product Code: SFPQRFIT



Designed to build  
1.5m or 2.4m or 3m length flag.



\*Safety Flag products are not for public road usage

Colours shown are indicative only and may vary due to printing.  
Certain product may not be available in your area please, call or inquire online for clarification.

## Safety Flags & Parts



### Safety Flags

Safety Flags are available in lengths tailor made to suit your needs. All of the FSP Flags are UV Stabilised , extremely durable and hard wearing.

### Flag Mounts

#### BRASS NUT / CONNECTORS

Product Code: SFPBNM



#### Tow Ball Flag Mount (Netto Mount)

Product Code: TBFMN



#### Tow Ball Flag Mount (HD FSP Mount)

Product Code: TBFM



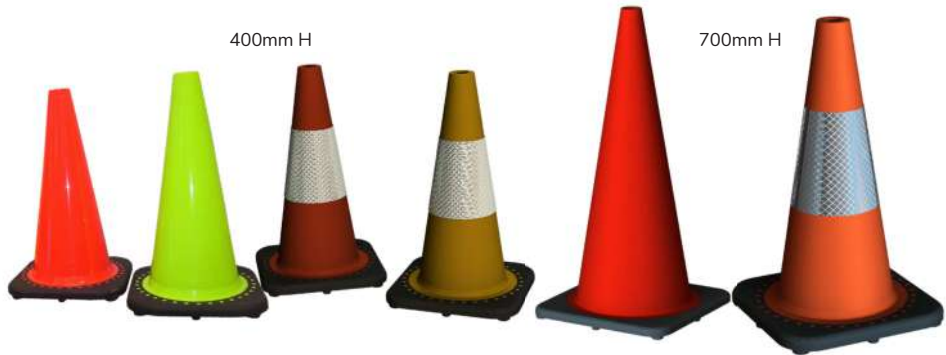
\*Safety Flag products are not for public road usage

Colours shown are indicative only and may vary due to printing.  
Certain product may not be available in your area please, call or inquire online for clarification.

## Safety Cones

Stable and light weight. Manufactured in Orange, Yellow, Blue, Red, or Green cones . Heavy Duty Base. Reflective sleeves can be attached for better night visibility.

Reflective available : white yellow green and red. . Safety cones are available in 2 sizes.



**Safety Cone 450**

**Product Code:**  
SC450

Standard Model

**Safety Cone 450R**

**Product Code:**  
SC450R

Reflective Sleeve  
Model

**Safety Cone 700**

**Product Code:**  
SC700RED

Standard Model

**Safety Cone 700R**

**Product Code:**  
SC700ORGRWHI

White Reflective  
Sleeve Model

## Portable Bollard

Bollards are an ideal safety product that allow for the application of caution tape rope or string to increase visibility or marking an area.

Portable and sturdy bollard for multiple purposes.

### Available Options:

- ▶ Custom height available
- ▶ Can be bolted to surface
- ▶ Area extra weights under base
- ▶ White and yellow available
- ▶ Black top cap

### Size:

Base: 400mm x 400mm  
Inner Base: 200mm x 200mm  
Pole diameter: 100mm



## T-Top Bollard

**Product Code: SBTTB**

1200mm H x 100mm R  
Weight 6kg.

Reflective Sleeve

Body Material: PE, PVC,  
PU,EVA

Base Material: PE, PVC, PU,  
EVA, Rubber Plastic.

Weighter Base

Reflective Film: High Intensity  
Grade Tape.



# Safety Barrier

Product Code: SBCCB



## FEATURES

- ▶ Constructed of high-density polyethylene, UV stabilised, resists corrosive elements, lightweight - total weight of (18kg).
- ▶ Allows handling by one person, the barrier may be joined into a variety of configurations, locks together via a locking loop on each end.
- ▶ Supplied with plastic swivel feet which can be adjusted in line for easy stacking.
- ▶ Units may be stacked onto a pallet for transportation or against a wall for storage.
- ▶ An Excellent barrier for delineation or denying pedestrian access to work areas.
- ▶ Solar Flashing Light can be mounted to the centre of Safety Barrier.

Size 2000mm W x 1200mm H x 90mm D

## STACKABLE



## PIN TO THE GROUND



## LOCK TOGETHER



# Barrier - Dirt Bag™

Product Code:  
SBDBBORA

This innovative barrier can be stabilised with sand bags, dirt or any other material when water is not available.

**NO WATER  
SANDBAG  
READY**



## FEATURES

Barriers are interlocking to form lengths required.

- ▶ Can be stacked compactly to save on valuable space as they nest into each other
- ▶ Standard pallet size in length; two stacks will fit on a pallet
- ▶ Suitable for sandbag or shovels of dirt if further stability is required, eliminating the need for filling or emptying with water
- ▶ Easily handled by one person, only weighs 11kg
- ▶ Reflective material may be applied for added visibility.
- ▶ Optional signs available for insertion into the top of the barrier

**STACKABLE**



**FORKLIFTABLE**

**SIGNAGE  
OPTIONS**



PA. 2014900879

Size: 700 H x 1145 W x 570mm D  
(without sign)  
Weight: 11kg

# Safety Signs



Safety Sign 600

Product Code: SSP600

Size: 700mm W x 700mm D x 610mm H



Safety Sign 900

Product Code: SSPB900

Size: 900mm W x 900mm D x 810 mm H



\*Signs do not include our solar beacons



Custom text available  
in either non reflective or Class 2 reflective material.  
Standard Colours available: White, Red, Yellow, Blue, Green.  
Available in 25 Colours





## Signage - Foldable

Product Code: SSAF

### Foldable Safety Sign



## Solar Lights - Flashing

Product Code: SLSEL

FSP Solar Beacons are used for delineation purposes and help assist in the identification of many different hazards.

Our Beacons are - Dust Proof, Light Sensitive, Solar Powered and can be easily fixed to FSP Safety Signs, Barriers, Rooftop IDs and Traffic Cones. Run time in excess of 12 hours – charge via energy from sun.



# Pallet Loading Angle

Product Code: TLA1000

Size: 1000mm L x 120mm W x 120mm H

Protect your Cargo from damage by your tie-downs.

Our heavy duty plastic Pallet Angle takes the pressure off the cargo by spreading tie-down pressures across the width of the pallet.

It eliminates cargo damage but still keeping the cargo tight and secure.

## Construction:

- ▶ Ridges for extra grip onto the load
- ▶ Long lasting UV resistant
- ▶ 100% Australian made

## Delivery:

Pickup locations around Australia and New Zealand.

Our Pallet Load Angle is available in bulk order.



# Wheel Nut Indicator

Product Code: WNI

The wheel nut indicator is designed to visually identify any movement of the wheel nut and/or excessive heating of the hub. Available in a range of sizes and extended shanks..



# Road Emergency Triangle

Product Code: SSTRIX3

Size: 430mm L x 430mm W x 430mm H

Weight: 1.35kgs (full package)

In case of a breakdown or emergency, keep you and your vehicle safe by being visible to oncoming drivers. With a reflective surface, the road emergency triangle provides extra visibility.

- ▶ Material ABS+PMMA
- ▶ 3 pieces and red plastic box
- ▶ Brilliant red reflectors on both sides even at night.



# Reggie Post™

Product Code: RP

## Advantages over Wooden Posts

- ▶ Break resistant when bent
- ▶ UV stabilised PVC
- ▶ No nails or clips means no vehicle punctures
- ▶ No heavy metals
- ▶ Trimmer friendly, post will bend and straighten up if hit
- ▶ Harvest more crop around posts due to flexibility
- ▶ Light colour reflects light and encourages growth



### Available in

Standard lengths of:

1.83m (6 feet)

2.13m (7 feet)

2.44m (8 feet)

Custom lengths  
available on request

Patent: WO 2020/019021



Fencing



Vineyard

### Organic Growers

Plastic Certification: The raw materials used in this plastic post make it suitable for food contact. The formulation does not contain any plasticizers or heavy metals.



Fully certified for use in organic vineyards by BIO GRO New Zealand

High impact polyethylene cap with rounded edges that will not snag over row netting.



### WIRE SLOTS

Detail of the Reggie Post illustrates the slots spacing (125mm apart)

This allows for variations in wire heights to support vines and grapes.  
Custom slots spacing available to suit your requirements.



High Impact polyethylene spike.



# Post and Rail Fence

Light and flexible alternative to metal and timber fencing



We have designed and engineered unique components for our post and rail fencing system.

The components are rust, saltwater and UV resistant.

An ideal long term replacement option for steel or wooden fencing.

**NO MORE PAINTING - Electric fencing compatible**

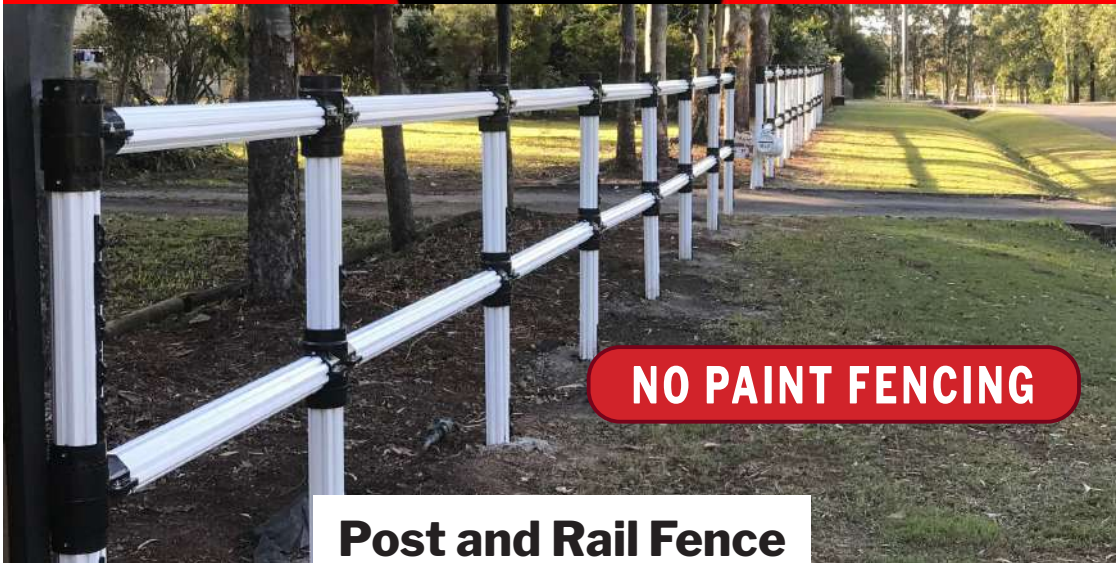
Some of the industry's we are working with include.

- ▶ Farming (wire fencing)
- ▶ Commercial fencing
- ▶ Mining & Industrial (safety fences)
- ▶ Aquaculture
- ▶ Fruit Growing



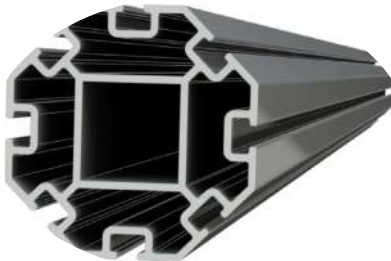
Colours shown are indicative only and may vary due to printing.

Certain product may not be available in your area please, call or inquire online for clarification.



## Post and Rail Fence COMPONENTS

Post & Rail



Fence  
Wire  
Clip

End Cap



Foot & Base  
Temporary base



Foot



T-Join



Cross Join



Pivot Join

Hill Angle kit



Right Angle Join

2/3/4 Join Kit



## FSP Tweena®

Wire fencing plastic strengtheners

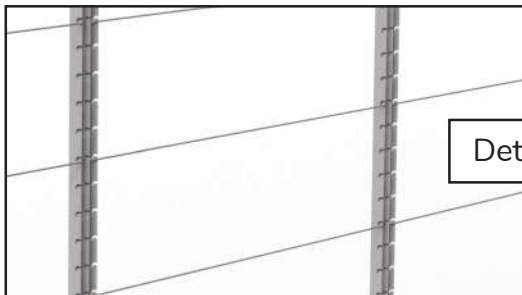


## Tweena®

The FSP Tweena® an ideal long term replacement for steel or wooden fence droppers (t-posts )and clips.

The components are rust, saltwater and UV resistant and don't need painting.

We have developed specialised components for our **post and rail fencing** system to suit our Tweena® .



Details



Colours shown are indicative only and may vary due to printing.

Certain product may not be available in your area please, call or inquire online for clarification.



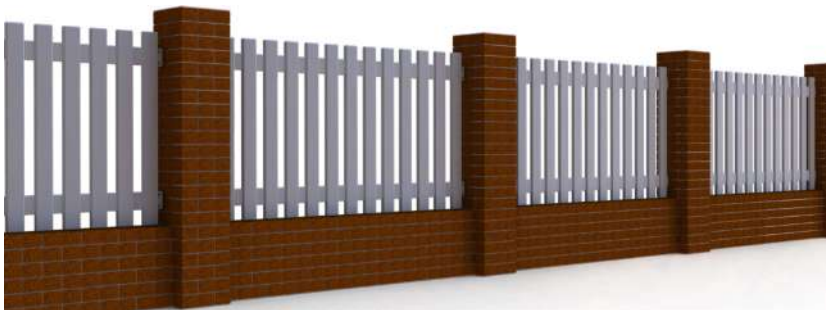
# Picket Fence

Product Code: PARF-PANEL

## No painting long life fencing

- ▶ Manufactured from HDPE plastic / UV Stabilised material
- ▶ No Painting required
- ▶ Can connect to our Post and Rail System

Panel Size: 2232mm W x 1200mm H



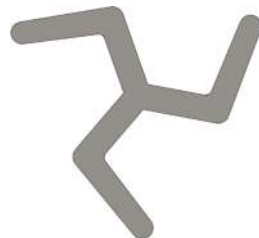
# Plicket

## PVC Electric Fence Posts

**Product Code: SEPLICK**

DESIGN REG 13235/2010. PATENT NO D664,668

- ▶ Manufactured from PVC modified / UV Stabilised material.  
30% stronger than normal plastic picket
- ▶ Patent on unique design
- ▶ Insulated for electric fencing
- ▶ Water resistant and Anti Corrosive
- ▶ White in colour for high visibility
- ▶ More forgiving to machinery damage
- ▶ Standard Length is 1.6m
- ▶ Available in other lengths upon request
- ▶ Star picket alternative



Cross-Section

Colours shown are indicative only and may vary due to printing.  
Certain product may not be available in your area please, call or inquire online for clarification.

# Oz Dock - Dry Dock system

Dry dock system for small boats and jet skis

Modular Dry Dock systems that gets your jet ski or boat out of the water in seconds

## Upgradeable

If you change your boat, buy a jet-ski or tinny and need a larger dry dock, simply add more pontoons to your existing Custom Dry Dock.

You can add extra blocks at any time, or even extend your dock to accommodate another jet ski or boat.

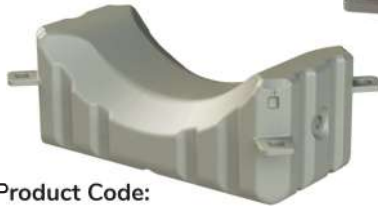
## Built to Suit

We can build a docking system to suit your jet ski perfectly. All our docks are modular systems which can be custom built to suit your jet-ski needs.

Popular size dock for a jet ski is 3.5 metres x 2 metres.

**MARINE**

## COMPONENTS



Product Code:  
OZDOCK-UFLOAT



Product Code:  
OZDOCK-CUBE

Product Code:  
OZDOCK-NUT



Product Code:  
OZDOCK-RING

Product Code:  
OZDOCK-PIN



Product Code:  
OZDOCK-BOLT



Product Code:  
OZDOCK-SKID PIN



JET SKI FLOAT

# Oz Dock - Dry Dock system

Very versatile:

Aquaculture to Swimming Platforms

Solar power farm to Private jetty's



## AQUACULTURE

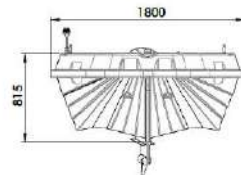
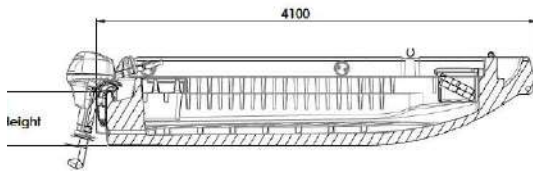
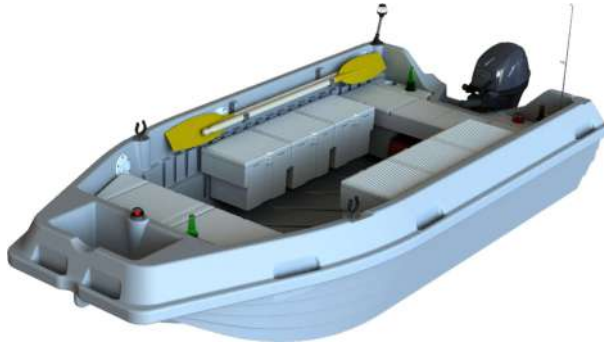


## SOLAR ENERGY FARMS

Colours shown are indicative only and may vary due to printing.  
Certain product may not be available in your area please, call or inquire online for clarification.

## Poly Boat

Poly water craft - extra strength and durability



- ▶ UV stabilised and corrosion resist against salt water - No Rust.
- ▶ Removable seat storage boxes with hide away handle - Designed to fit safely and securely.
- ▶ Flat floor with drain channel and corner drainage.
- ▶ Anchor storage with drainage.
- ▶ Transom fits standard outboard motors.
- ▶ Storage box for marine battery.
- ▶ Multiple tie off/carry handles.

## Bug Boat

1 person tender boat

**Product Code: BUG**

Length 2500mm  
Beam: 1400mm  
Height 380mm



# Megadock Pontoon

## Modular Floating Walkway

1529kg load capacity

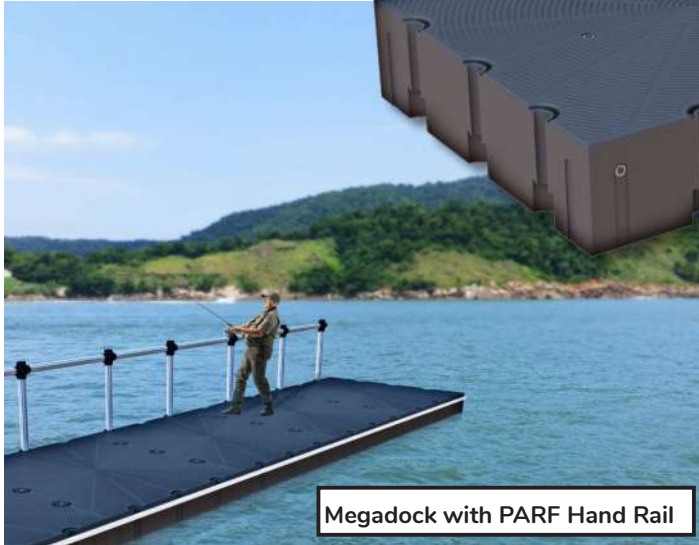
Designed for our post & rail fence as hand rail

Unique stability float system

**Product Code: PONTOON-MEGADOCK:**

2998mm L x 2498mm D x 650mm

WEIGHT 225kg.



Megadock with PARF Hand Rail

## Pipe Floats



# Water Trough

Long term water storage

Product Code: MWTTROUH

WATER TANKS



## INLET

Brass inlet  
BSP ID 1inch  
BSP OD 1&1/4  
Recessed under  
tank for  
protection  
Internal pipe work

## OUTLET

1 1/2" BSP

## UV STABILISED POLY TROUGH

### 1000 ltr cattle/horse trough

1420mm W x 680mm H



## POLY FLOAT COVER

UV stabilised



## POLY FLOAT

Brass body  
Stainless steel  
float arm  
Stainless steel  
seat  
UV stabilised

Colours shown are indicative only and may vary due to printing.

Certain product may not be available in your area please, call or inquire online for clarification.

# Water Tanks

Long term water storage

**Oz Water Tanks** have been designed for longevity and are extremely strong.

Ribbed walls are designed to enforce and prevent bulging.

Tanks are moulded in one piece, there are no joints or weak points therefore no leaks will occur.

Tank has four overflows positions that enable the customer to cut a hole where it suits the drain pipe.

Tanks are made from virgin polyethylene, we do not use reconstituted or previously used materials(recycled).

**Oz Water Tanks** comes with a 10 year warranty.

UV Stabilised to ensure long lasting durability to withstand the harsh sun.

Polyethylene tank excludes light and therefore inhibits algae growth.

Compliance **Oz Water Tanks** meet Australian Standard AS/NZS4766 in design and manufacturing under taken to meet that requirement and also includes. Australian standard AS 2070 food grade/AS 4020 for drinking water.

**Oz Water Tanks** are FEA certified.







**1500 LITRE ROUND TANK**

**Product Code: WT1500**

DIMENSIONS: (H x D)  
1280 x 1420mm



**3000 LITRE ROUND TANK**

**Product Code: WT3000**

DIMENSIONS: (H x D)  
2180 x 1420mm



**3000 LITRE SLIMLINE TANK**

**Product Code: WT3000S**

DIMENSIONS: (L x W x H)  
2150 x 785 x 2500mm



**5000 LITRE ROUND TANK**

**Product Code: WT5000**

DIMENSIONS: (H x D)  
2180 x 1820mm

# Portable Evaporative Cooler

Product Code: HP36BX

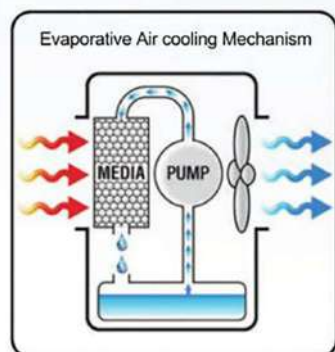
- ▶ Portable Industrial fan
- ▶ Variable speed - 240v
- ▶ Enclosed motor
- ▶ Heavy-Duty plastic mould
- ▶ Standard garden hose water supply
- ▶ Long life cooling media
- ▶ On rollers for easy movement
- ▶ Maintenance free pump

Size:

158cm L

75cm W

180cm H



# OZKI® Ice Box

Heavy duty cooler



## FEATURES

- ▶ Cold storage time of over 5-7 days\*
- ▶ Roto molded polyethylene HDPE
- ▶ Thickened PU foam layer
- ▶ With non-slip, seamless feet pads
- ▶ Nylon handle-ropes
- ▶ Environmental protection no-fading, and UV resistant
- ▶ Water plug to drain water
- ▶ Bottle opener built in
- ▶ Built-in lock/ tie-down mount
- ▶ Stubbie holder indent

## Bulk Order - OZKI® Ice Chests

Different design to the OZKI® Ice Box

Add your brand.  
 Excellent Merchandising products.  
 Quality construction.  
 Multiple colours available.

Sizes:

45 ltr - 63 ltr - 72 ltr

90 ltr - 110 ltr - 1000 ltr

Minimum order quantity 20



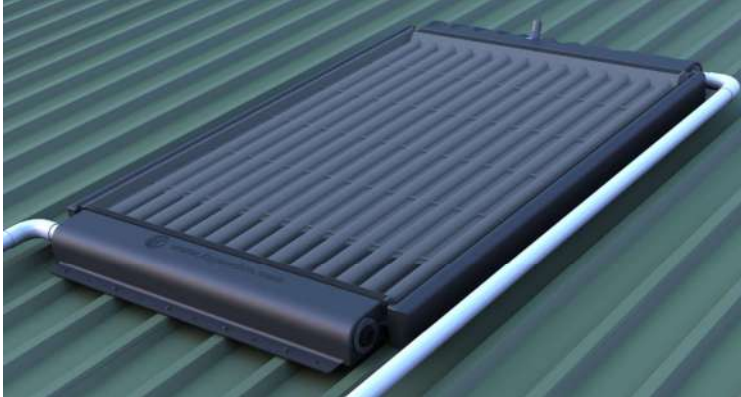
# Solar Pool Water Heater

*Extend your swimming season*

FSP's solar pool heating panels are extra efficient and a cost-effective way to heat your pool.

The solar pool heaters will reduce your heating costs for your pool and lower your carbon footprint.

The solar pool heating panels will also extend your pools swimming time by months, giving you more fun family outdoor time.



## How To Order

For more information regarding any of our products or to view samples, please contact your local branch.

Call **08 9479 4988** or visit us online at:  
**equipmentplacement.com.au**

### HEAD OFFICE

170 Kewdale Road, Kewdale WA 6105

Ph (08) 9479 4988

sales@equipmentplacement.com.au



